

Nuova Sguassero S.r.l.

Company Profile

Intro



NUOVA SGUASSERO SRL INHERITS THE TECHNOLOGICAL AND COMMERCIAL SKILLS OF NSGUASSERO SPA IN THE PRODUCTION OF FIBERGLASS PIPES FOR CIVIL, INDUSTRIAL AND MARINE APPLICATIONS.

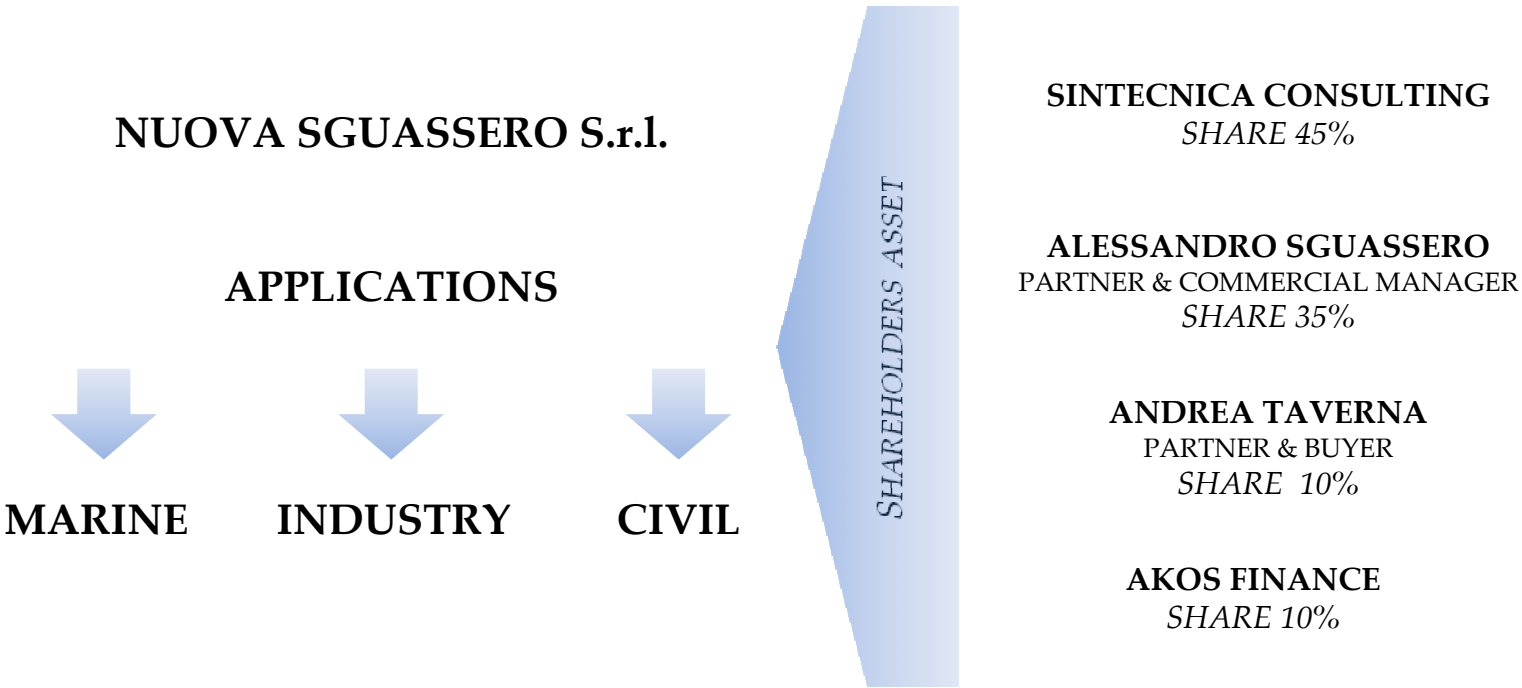
NSGUASSERO SPA CAUSES OF DEFAULT ARE THE CONTRACTION OF EUROPEAN MARKET AND THE EXCESSIVE OVERHEAD COSTS OF TWO PRODUCTION PLANTS.

NUOVA SGUASSERO SRL IS THE “GOOD COMPANY” BORN FROM THE DEFAULT OF NSGUASSERO SPA AND IT RENTED THE PRODUCTION PLANT IN SAN GIORGIO DI NOGARO (UDINE).

ALL THE KNOW-HOW, THE CERTIFICATIONS AND THE TYPE APPROVALS ARE MAINTAINED TO CONTINUE TO PROVIDE THE BEST SERVICE TO OUR NATIONAL AND INTERNATIONAL CUSTOMERS.

NUOVA SGUASSERO SRL FACES THE MARKET WITH AN OPTIMIZED TO COST STRUCTURE AND ORGANIZATION ENSURING A HIGH LEVEL OF PRODUCT QUALITY AND CUSTOMIZATION.

Shareholders



Mission & Vision



PROACTIVITY AND EFFICIENCY IN THE
REALIZATION OF
**FIBERGLASS PIPES, FITTINGS AND SPECIAL
PIECES**
HIGHLY CUSTOMIZATION OF PRODUCTS AND
SERVICES

M
I
S
S
I
O
N

- √ CUSTOMER SERVICE
- √ QUALITY
- √ REACTIVITY
- √ KNOWLEDGE

V
I
S
I
O
N

Applications

GRP (GLASS REINFORCED POLYESTER) AND GRP REINFORCED THERMOPLASTICS (PVC-PP-PVDF-PVCC-PE-ECTFE) PIPING, VESSELS AND SPECIAL PIECES DESIGN, PRODUCTION AND SALES FOR MANY APPLICATIONS AS DETAILED BELOW.

MARINE



CIVIL WORKS



INDUSTRY



SPECIAL ITEMS



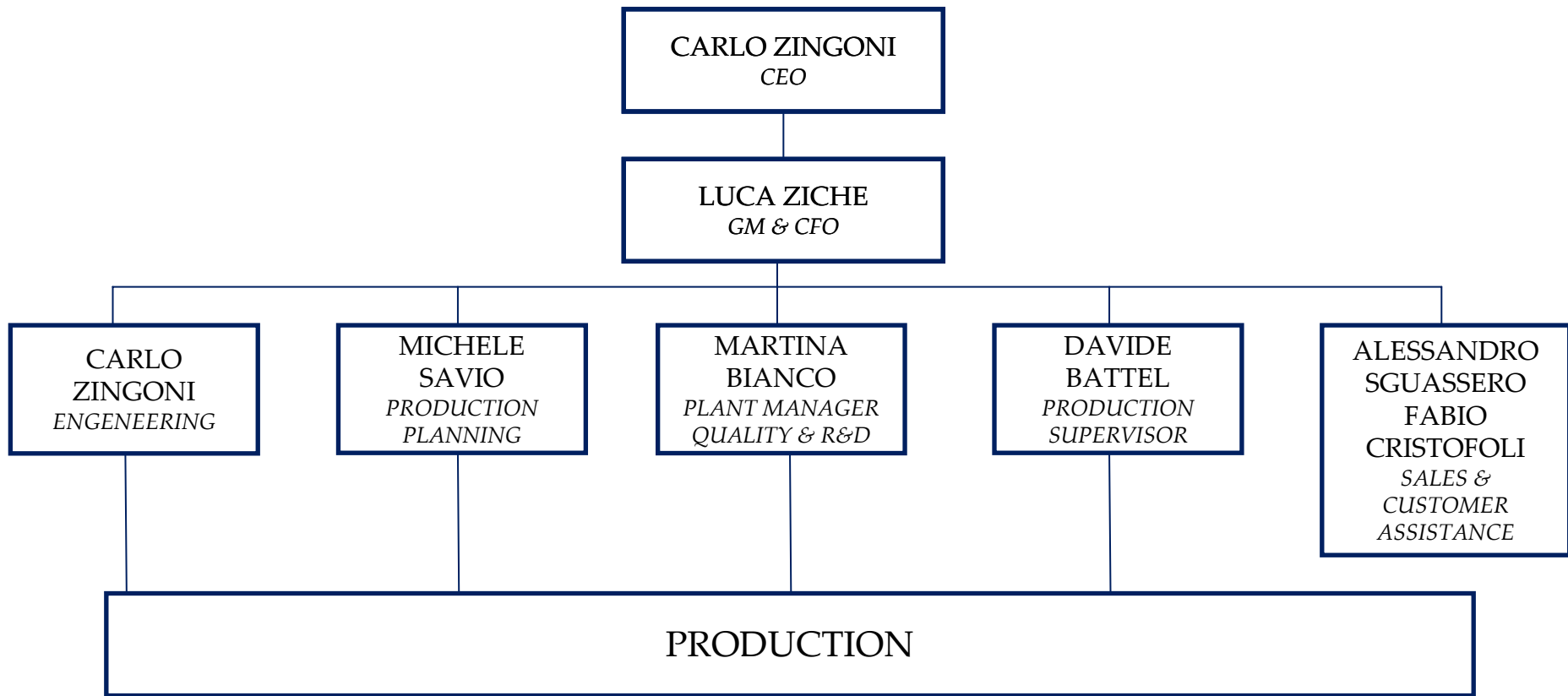
REINFORCED THERMOPLASTICS



Our team



THE ENGINEERING AND MANUFACTURING DEPARTMENTS ARE MAINTAINED AFTER A DEEP ANALYSIS OF CORPORATE RESTRUCTURING LEADING TO A SIGNIFICANT REDUCTION IN COSTS, MAINTAINING A HIGH LEVEL OF QUALITY.



Main projects in progress



PROJECT	CUSTOMER	END USER
HULL 6223	FINCANTIERI SPA	CARNIVAL CRUISE LINES
HULL 6224	FINCANTIERI SPA	CARNIVAL CRUISE LINES
HULL 6231	FINCANTIERI SPA	CARNIVAL CRUISE LINES
YACHTS	AZIMUT SPA BENETTI DIVISION	PRIVATE OWNERS
BARBARA T E T2 OFFSHORE PLATFORMS IN ANCONA (ITALY)	RENCO SPA	ENI SPA
KENYA PROJECT	GREEN ENERGY GROUP A.S.	GREEN ENERGY GROUP A.S.
CHIMNEY IN SUADI ARABIA RAS TANURA INTEGRATED PROJECT	SCAN COMPOSIT A.S.	DOW - KBR
PRELUDE FLOATING LNG PROJECT	CANNON BONO ARTES DIVISION	TECHINT SPA

Our Customers



- ✓ **A2A**
- ✓ ADRIATIC SHIPYARDS
- ✓ AEROMECCANICA STRANICH
- ✓ AN.CO CONSULTANTS
- ✓ ARGAL
- ✓ ARSENALE CARTUBI
- ✓ ASTER
- ✓ ASTI SUD
- ✓ **ATLAS HF ISLANDA**
- ✓ **AZIMUT BENETTI**

- ✓ BESA
- ✓ BETTONI
- ✓ BONATTI
- ✓ BORSODCHEM
- ✓ **BRODOSPLIT**

- ✓ CALZAVARA
- ✓ CANTIERI DI BAIA
- ✓ **CARNIVAL CRUISES**
- ✓ CONSORZIO BARAGGIA
- ✓ COOMI
- ✓ COSMEC
- ✓ COSMI
- ✓ **COSTA CROCIERE**

- ✓ DA.MA.
- ✓ **DEGREMONT**
- ✓ DUME-TRADE

- ✓ ECOIMPIANTI
- ✓ **EDISON**
- ✓ **ENEL**
- ✓ **ENI**
- ✓ EUROMAR

- ✓ FAD INTERNATIONAL
- ✓ FAINI
- ✓ **FIBERPIPE**
- ✓ FINAVAL/TEKNE' SAM
- ✓ FINAVAL-ISOLA MAGE
- ✓ **FINCANTIERI**

- ✓ GAIARDO
- ✓ GAYMARINE

- ✓ HAFNER
- ✓ **HOLLAND AMERICA**
- ✓ HOLSON IMPIANTI
- ✓ **HYDROBAT**

- ✓ **IMPRESA COLETTO**
- ✓ **IMPRESA MANTOVANI**
- ✓ IMS
- ✓ INFINEUM
- ✓ INT
- ✓ ISCO
- ✓ ISTAK ICELAND
- ✓ **ITALTECNICA**

- ✓ **KAWASAKY HEAVY INDUSTRIES**

- ✓ **MAPEI**
- ✓ MARCATO
- ✓ MARCHETTI IMPIANTI
- ✓ MEMC MERANO
- ✓ **MITSUBISHI HEAVY INDUSTRIES**

- ✓ OFFICINE FAI CARVICO
- ✓ OSCULATI

- ✓ PLAST CO

Our Customers



- ✓ RAFIT
- ✓ RENCO
- ✓ RESIN PIPING
- ✓ RESIN PLAST
- ✓ ROSSI RENZO COSTRUZIONI
- ✓ RUBBERPLAST

- ✓ SAIPEM
- ✓ SCAN COMPOSIT
- ✓ SELIP
- ✓ SHELL INTERNATIONAL
- ✓ SIEMENS
- ✓ SIMAM GELA
- ✓ SIR INDUSTRIALE
- ✓ SNAMPROGETTI SUD
- ✓ SOLVAY SOLEXIS
- ✓ SPIG
- ✓ SPIN
- ✓ SWS SOFINTER

- ✓ TECHINT
- ✓ TECNO RECUPERI
- ✓ TECNOFAB GHANA
- ✓ TECNOPLAST
- ✓ TELECOM ALDEN A
- ✓ TESSENDERLO PIEVE VERGONTE
- ✓ TVK SHIPYARD
- ✓ TWIN DISC

- ✓ VDF IMPIANTI
- ✓ VEOLIA
- ✓ VERSTEDEN
- ✓ VETUS ITALIA
- ✓ VINA VIL
- ✓ V-SHIP G. VERNE

- ✓ WTD

- ✓ YARA ITALIA